

To our Customers using Tokyo Keiki ECDIS,

Urgent Notice: ECDIS – SA Certificate File Update

A SA certificate¹ is required to display ENC (Electronic Navigational Chart) on ECDIS (Electronic Chart Display and Information System) and has been already installed on your ECDIS. When it is expired, an error message will appear on the display during chart installation and update and then ENC can no longer be updated. Your ECDIS needs to be equipped with updated certificate before you update ENC. (The old certificate expired on August 29th 2013.)

ECDIS models whose certificate should be updated are described below. We would appreciate it if you could update it following the procedure below. Please feel free to contact us if you have any questions. We thank you in advance for your cooperation.

1. ECDIS models whose certificate should be updated

Model	Software version	Valid term of SA digital certificate
EC-8000 EC-8500 EC-8000K EC-8500K EC-7000-A EC-7500-A ECS-4000 *	All versions	Before update: From Sep 1, 2003 to Aug 29, 2013 After update: From Feb 6, 2013 to Mar 3, 2033

* ECS-4000 is not a type-approved ECDIS but the certificate file should be updated.

2. How to update the SA certificate

- (1) Get a certificate file "IHO.crt" from an ENC CD/DVD distributed after August 2013. You can also get the [new certificate file](#) from [IHO website](#). A chart media of UKHO AVCS might not include "IHO.crt" but "PRIMAR.crt". You can use "PRIMAR.crt" in the place of "IHO.crt".
- (2) Install the certificate file on your ECDIS using the following document and the procedures. Please refer to the ECDIS operator's manual as well.

3. Contact information

Tokyo Keiki INC.

TEL 81-3-3737-8611, FAX 81-3-3737-8663

Tokyo Keiki service stations

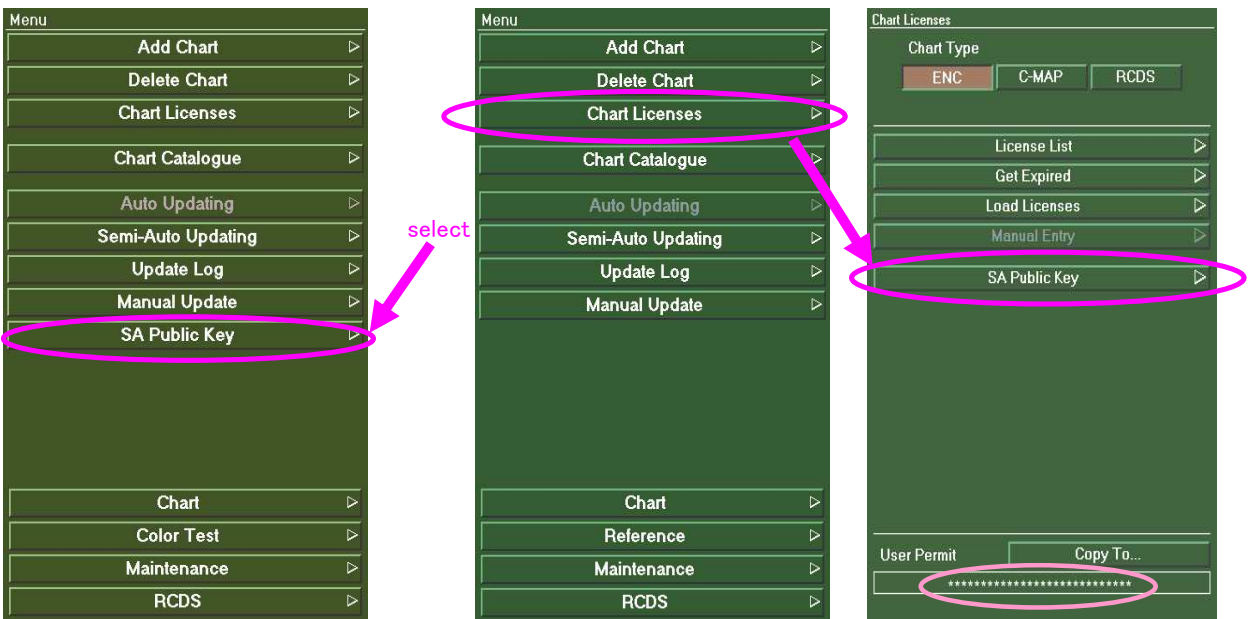
See <http://www.tokyo-keiki.co.jp/marine/e/office.html>

Web mail

https://www.tokyo-keiki.co.jp/form/webform_marine-e-serv.html

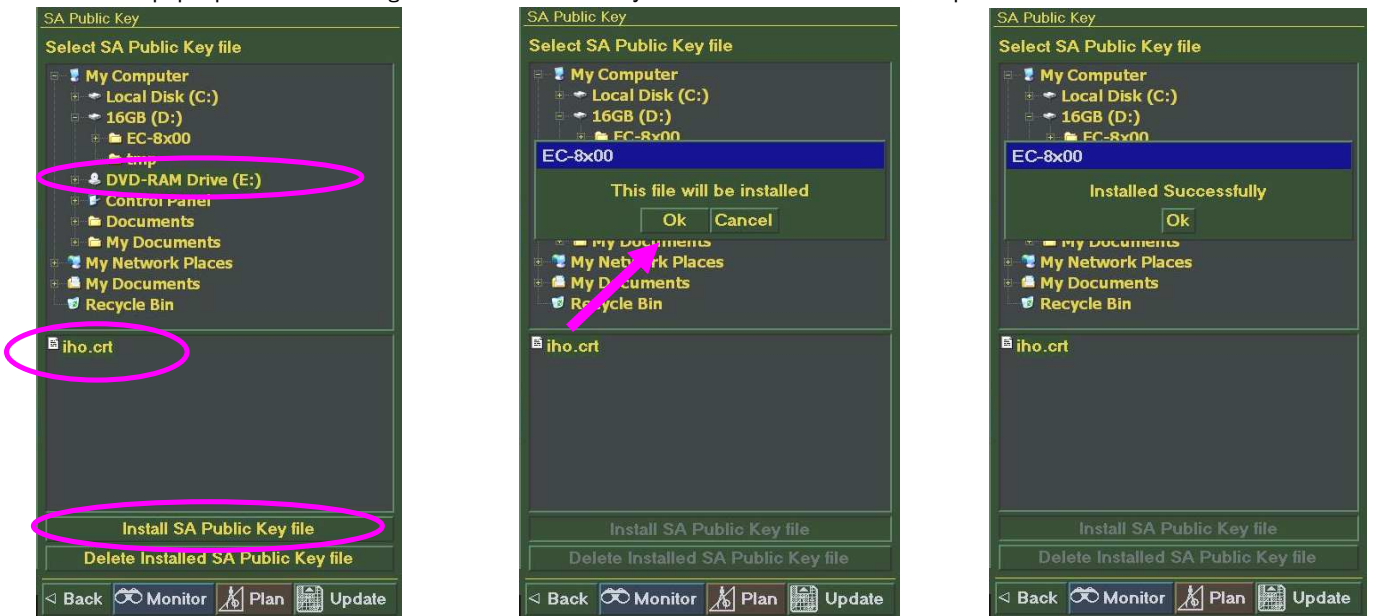
¹ SA certificate is a data file which verifies the distributed ENC data to be issued by a recognized organization. It should be installed on ECDIS to enable ENC to display. When it is expired, the error message SSE05 or SSE22 will appear. In this condition you can still see the existing ENC on your ECDIS, however you can no longer update it.

- 1 Insert ENC update chart CD's, whose issue date is after August, 2013, into CD drive tray.
- 2 Select Update menu and choose the update tab. If you see 'SA Public Key', select it.
- 3 If you cannot see 'SA Public Key', select 'Chart licenses' and press 'SA Public Key'.



- 4 You see the following menu and choose 'DVD-RAM Drive (E:)' here. You see a file name 'iho.crt' below. Select it to highlight and then press 'Install SA Public Key file' to load the file. If you download SA certificate file from IHO web site and copy it to an USB memory, choose 'removable disk'.

- 5 You see a pop-up window showing 'This file will be installed'. Press "OK". You see a pop-up window showing 'Installed Successfully'. Press "OK" and finish the update.



- 6 Eject the chart CD or USB memory.

(Note) These screen images related to menu are used in EC-8000 series.
Even if your ECDIS is not EC-8000 series, the screen images are almost the same.